

TULYAM
Where living is divine

TULSI WING'S APARTMENTS in Vrindavan

About Our Project

Feed Spoilt for choices...

We will not only give you the top notch and top-quality construction along with best of amenities... but also give you ample number of Unit options to choose from. Pick a number that best favours your numerology. Go for an entrance that improves your success chances. Decide which view would you like to relish from your balcony with a cup of tea in your hands...

If you are choosy – we are a paradise for you!

It's a matter of prestige

*It's not just your home – it's a matter of prestige.
It stands for everything that you are and you have achieved in life.
It is one thing that completes you.
Your address defines how people will address you!
It's a sign of prosperity and adds to your dignity.
It's not just an entity ... It rather becomes your identity!*

Hop, Skip & Splash

*At Our Project YAMUNA CITY Every day is a Pool Day! Every day is a Cool day!
Enjoy a nice day in the pool to beat the summer heat, and take a nice sun bath when the season enters the winter!
A long stretch of Swimming Pool will have ample of space for all your whims and fancies.*





WELCOME TO TULSI WINGS APARTMENTS



Tulsi Wings is an architectural marvel blending avant-garde design, ultra-modern balconies, and innovative living concepts. With sleek corridors, glazed windows, and intricate jaali work, it offers a perfect harmony of modern elegance and lavish interiors.



Tulsi Wing's

Welcome to Tulsi Wings Residences, your serene retreat in the heart of Vrindavan, Mathura. Nestled in the spiritual city known for its rich cultural heritage and divine ambiance, Tulsi Wings offer a project bland of modern comfort and traditional charm.

Tulsi Wings introduce the concept of "spiritual boutique stay" in ritzy design and elevated existence in the from of sky villas architecturally planned into the apartment living style giving you the privacy space and opulence of an independent villa and to provide a peaceful and comfortable stay, whether you're here for a spiritual journey, a family vacation, or a business trip.

Each villa is thoughtfully interior with Scandinavian style incorporate neutral colour palette with modern kitchen, contemporary amenities and upscale furnishing to ensure a relaxing, enjoyable and luxury experience.

Coming up on main ramtaal road, at Tulsi Wings you can enjoy the tranquility of Vrindvan while being close to major temples and attractions.

Experience the divine essence of Vrindavan with the comfort and luxury ot Tulsi Wings Residential Lux Stay. Welcome home!



INTERIOR

BEDROOM

The amalgamation of minimal and rich modern fittings, the bedroom of Tulsi Wings will spoil you with the ultimate luxury imaginable. The master bedrooms are connected to an adjacent sun longer balcony cum pavilion and with separate space provision to create a lounge. Well fitted and thematically designed wardrobes, doors and windows complete the luxury bedroom.

KITCHEN DINING

The kitchen-cum-dining area blends elegance and functionality, featuring high-end appliances, custom cabinetry, and premium countertops. An open layout flows into a stylish dining space with chic seating, refined décor, and warm lighting—crafted to deliver comfort, sophistication, and indulgence.



Specification

● LIVING / DINING AREAS, LOBBIES / PASSAGE

Flooring: Combination of Polished Indian and Italian textured Tiles
Wall Finishes: Royal Emulsion on Plaster + POP
Ceiling Finishes: Oil bound Distemper on Plaster + POP

● BEDROOMS

Flooring: Combination of Polished Indian and Italian textured Tiles
Wall Finishes: Acrylic Emulsion on Plaster + POP
Ceiling Finishes: Oil bound Distemper on Plaster + POP

● KITCHEN

Flooring: Matt finished vitrified tiles
Wall Finishes: 2' high ceramic tiles dado above counter; Oil bound distemper over plaster in remaining areas
Ceiling Finishes: Oil bound Distemper on Plaster + POP
Counter: Polished granite or Marble
Fixtures and Fittings: Modular factory-made cabinets, stainless steel sink and mixer of standard brands
Gas Supply: Provision for PNG connection in future



● STRUCTURE

RCC flat slab structure with peripheral beams and infill brickwork, designed in compliance with Seismic Zone IV, adequately fulfilling all earthquake safety requirements. The structure has been designed to accommodate expansion on second floor.
(Floor to Ceiling Heights): 3.1 mts (approx)

● ROOF

Pre-cast cement tiles / PCC finish over suitable waterproofing and insulation treatment

● STAIRCASE

Flooring: Polished Indian Stone or granite on Treads, Risers and Landings. Stone to match surrounding lobby flooring.
Railing: Combination of Stainless Steel and wooden handrail
Wall finishes: Shyne Emulsion on Plaster + POP
Staircase Soffit: Shyne Emulsion on Plaster + POP

● TOILETS

Flooring: Matt finished vitrified tile
Wall Finishes: Glazed / Matt finished ceramic wall tiles up to Dado level (approx. 2100mm). Oil bound Distemper on Plaster in remaining areas
Ceiling Finishes: Oil bound Distemper on Plaster
Sanitary Ware: Wash Basin and European Water Closet (EWC) of standard brands
C.P. Fittings and Accessories: Basin Mixer, shower mixer / diverter with bath spout and overhead shower, health faucet along with necessary angle valves etc. of standard brands All toilet floors provided with suitable and adequate waterproofing treatment



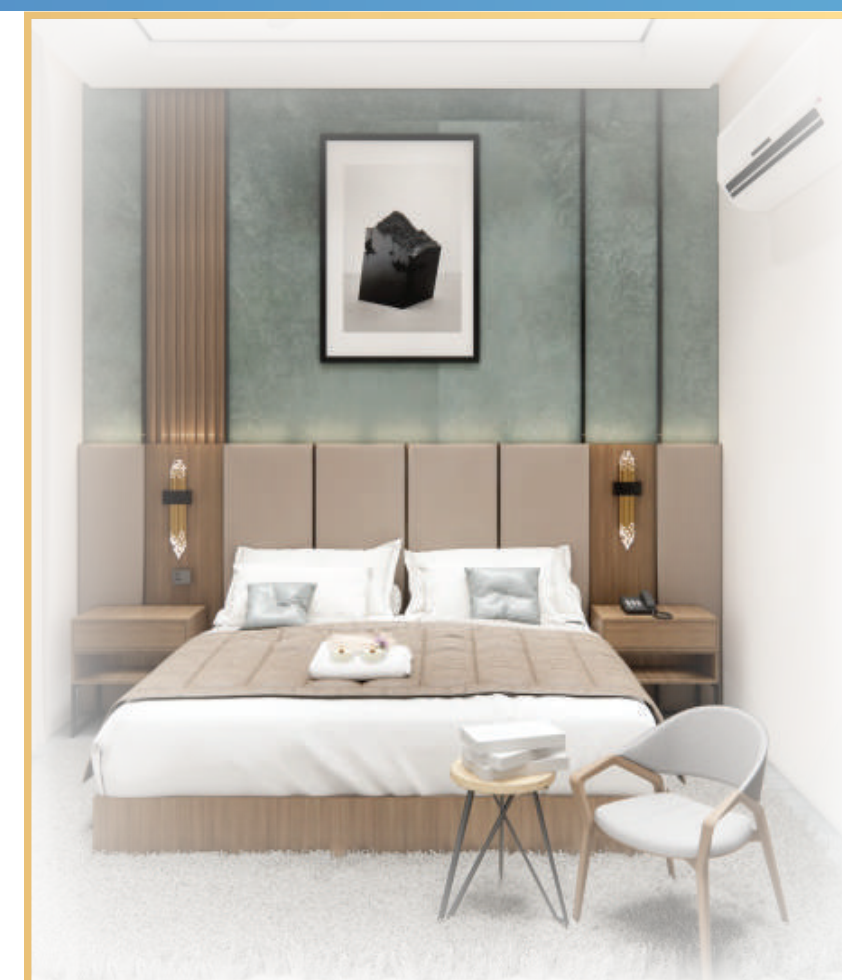
1 & 2 BHK FLAT

ELECTRICAL

Fixtures and Fittings: IS Compliant Modular switches/sockets, Distribution Boxes and Circuit breakers from standard makes and brand.

Wiring: IS Compliant Copper wiring in concealed conduits. Provision for CAT5 cabling for advanced power management systems. Adequate provision for light points, fan points, receptacles and power points In all rooms. Electrical points for exhaust fans in Kitchens and Toilets.

Electrical points for Air-conditioners provided in appropriate locations in Bedrooms and Living room.



DOORS

Main Entrance Door: Polished Hardwood frame with veneered flush door shutters.

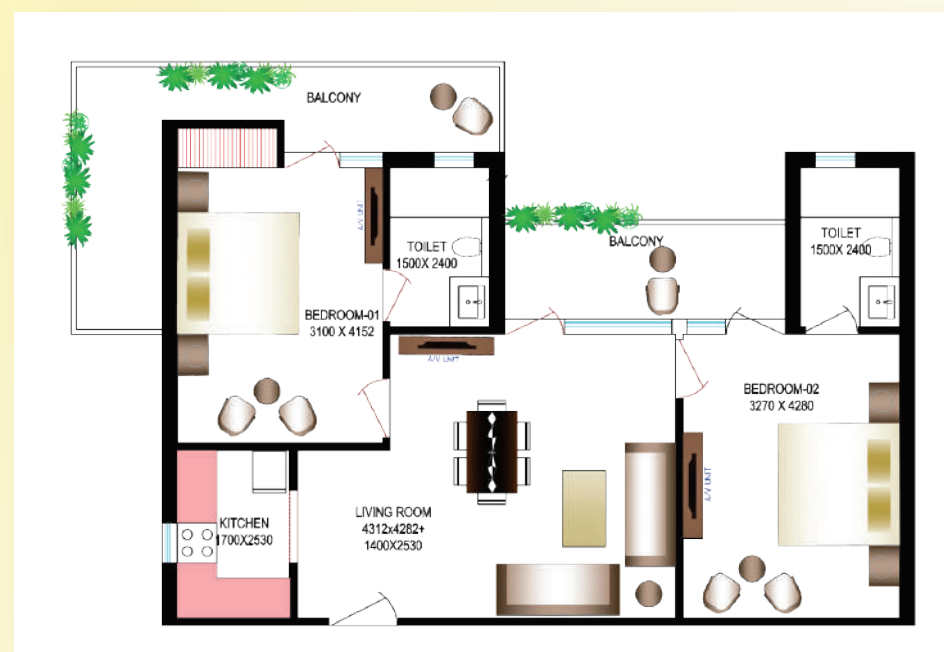
Internal Doors: Polished Hardwood frame with veneered flush door shutters.

Hardware: Locks, Handles and knobs (Mortise and Cylindrical locks) from reputed makes and brands. High quality steel / brass hardware. Windows and external glazing: Powder Coated Aluminum Frame or uPVC frame windows with clear toughened glass.

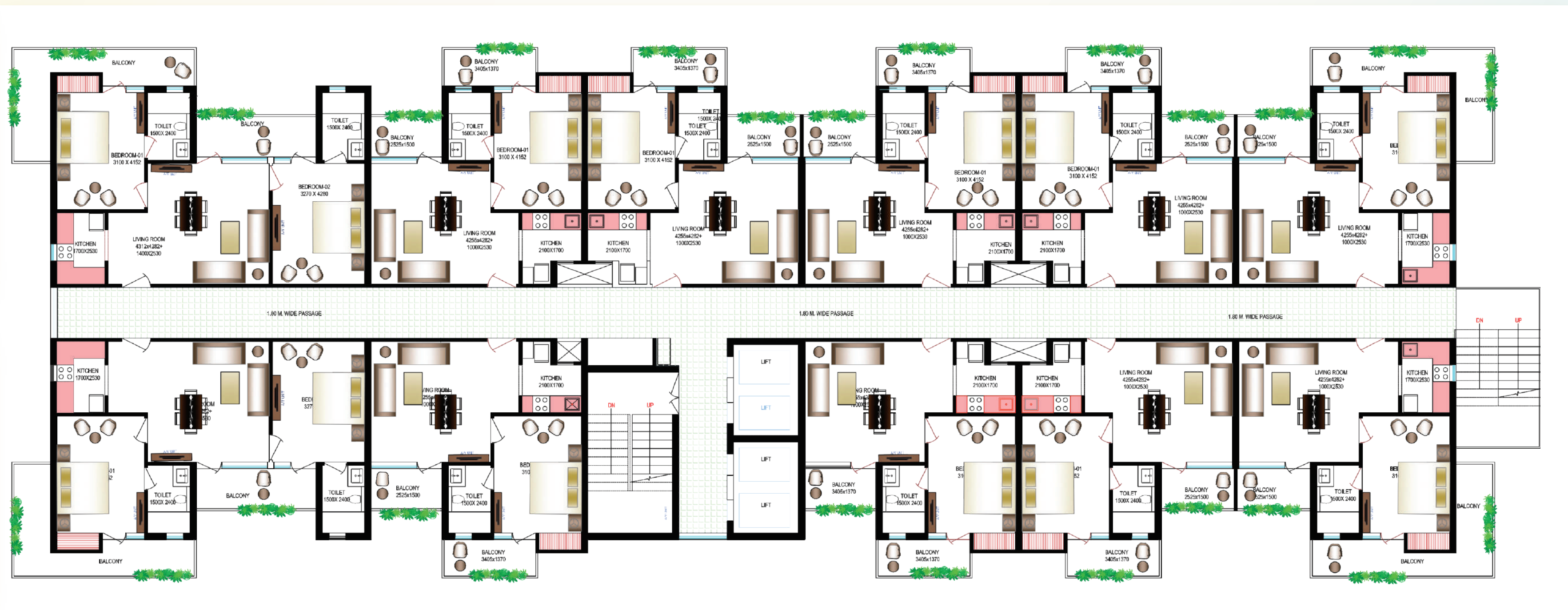


FLOOR PLAN

1 BHK PLAN



2 BHK PLAN



GROUND FLOOR TO 13TH FLOOR PLAN



TOP FLOOR PLAN



Top Floor Plan

The top floor of Tulyam Residences offers an exclusive lifestyle with spacious layouts, panoramic views, and a serene environment above the city buzz. Designed for elegance and comfort, these homes maximize natural light and ventilation, blending modern architecture with divine surroundings.

Highlights:

Expansive balconies & terraces with scenic views.

Premium privacy with limited units per floor.

Enhanced ventilation & natural light across all rooms.

Ideal for those seeking a luxury retreat in Vrindavan's spiritual aura.



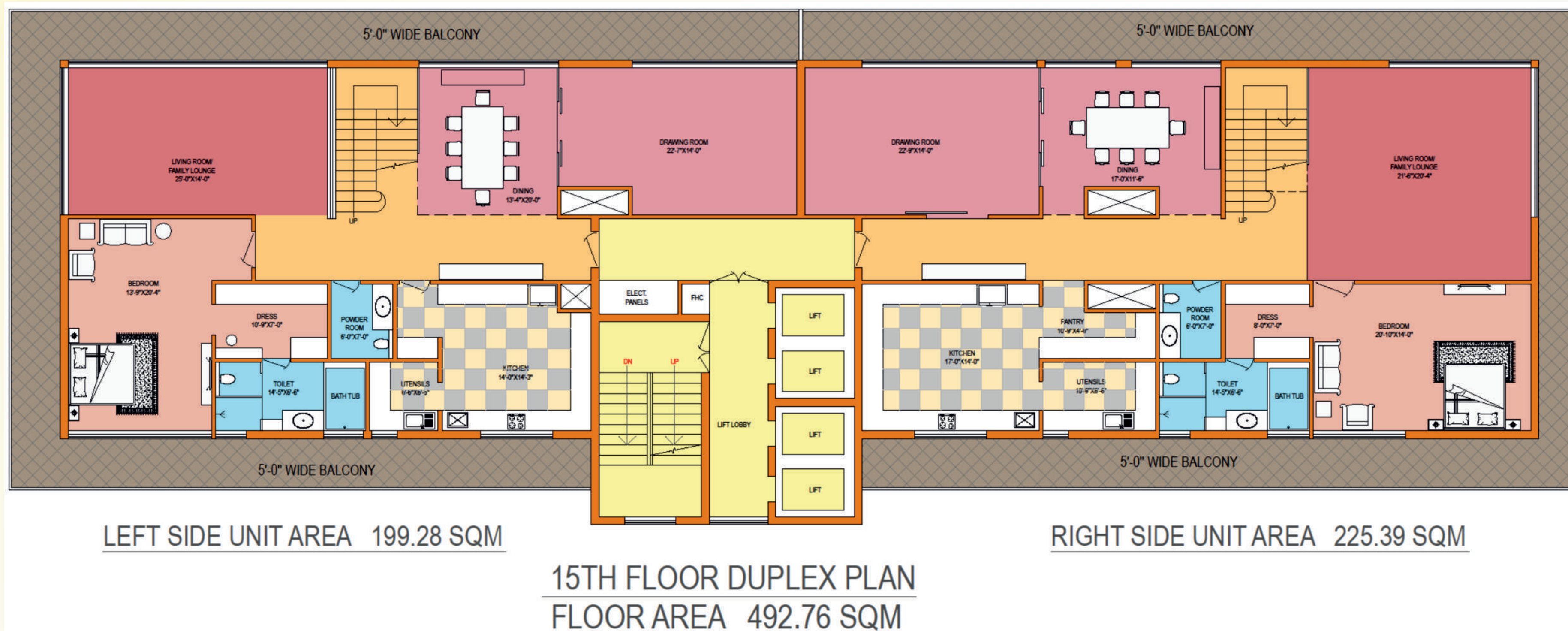
TOP FLOOR PLAN



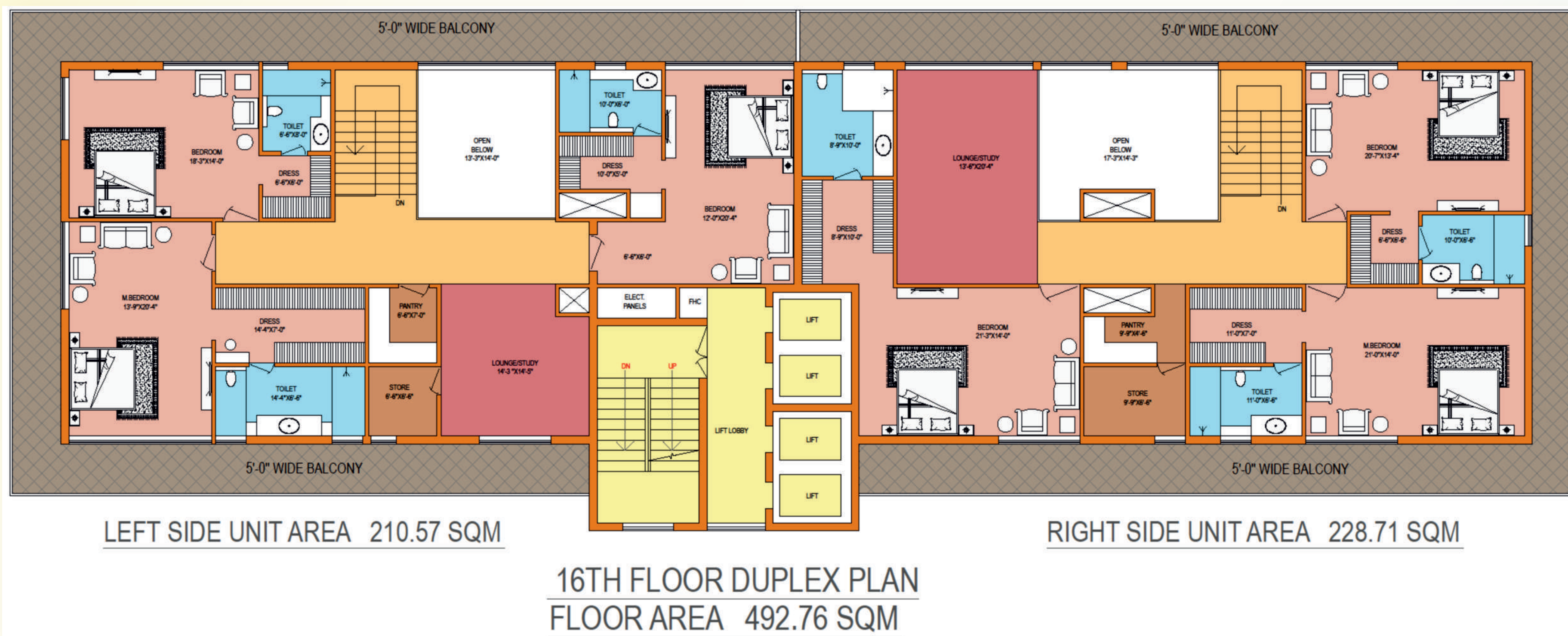
14TH FLOOR PLAN
FLOOR AREA 492.76 SQM



TOP FLOOR PLAN



TOP FLOOR PLAN



TOP FLOOR PLAN



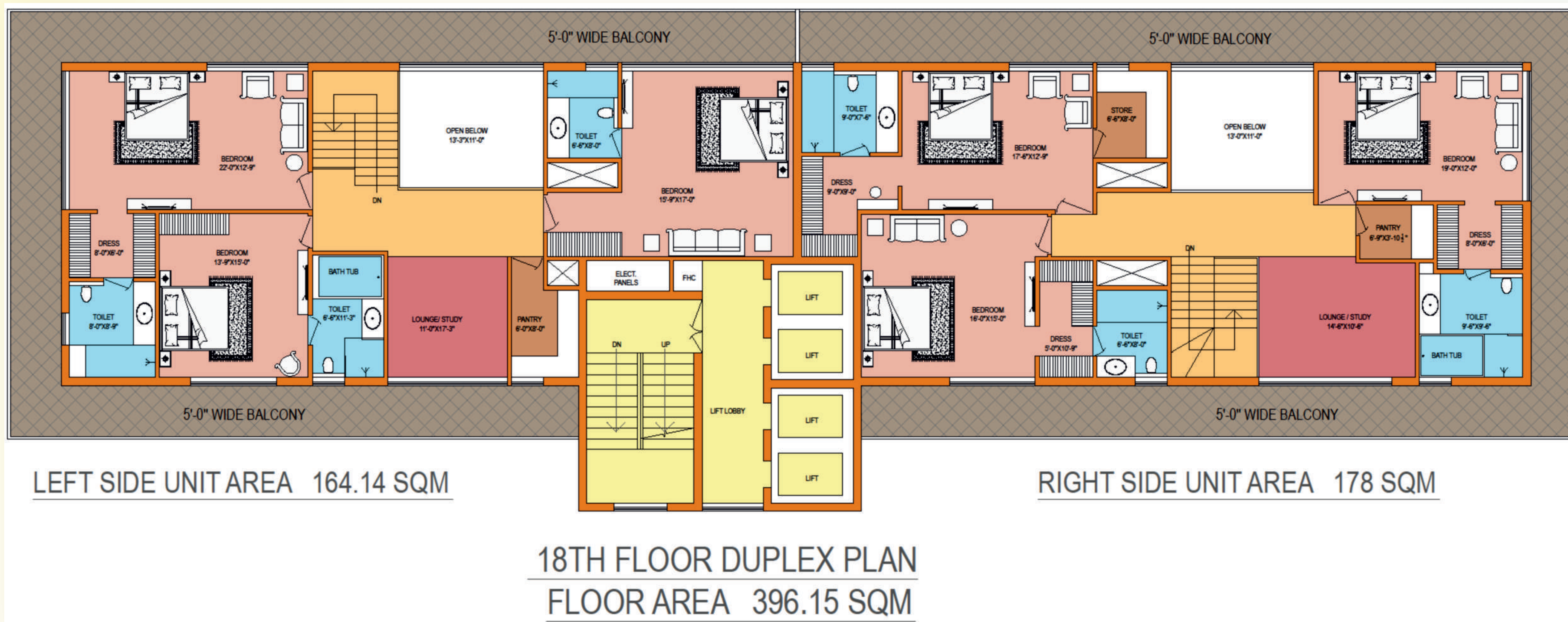
LEFT SIDE UNIT AREA 154.44 SQM

RIGHT SIDE UNIT AREA 175.40 SQM

17TH FLOOR DUPLEX PLAN
FLOOR AREA 396.15 SQM



TOP FLOOR PLAN





Park



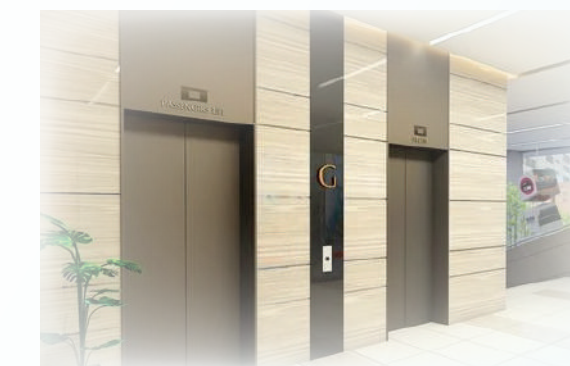
Swimming Pool



GYM Facilities



Temple



Lift Facilities



24X7 Security




*Power Backup for Common
Area Lighting & Lift*



Yoga





 Chaitanya Vihar S-5, 68-S, Chaitanya Vihar -2, Vrindavan
Vrindavan, Mathura, Uttar Pradesh, 281121

 **18001211101**

www.tulyum.com



THANK YOU

Tulyum is more than a home – it's a sanctuary of peace, prosperity, and timeless living.

